

Hand Control

Model : OT60.27
 Grossweight : 600 Gr
 Packing Dimensions : 20x10x10cm

- Full function hand control unit

Foot Switch

Model : OT60.28

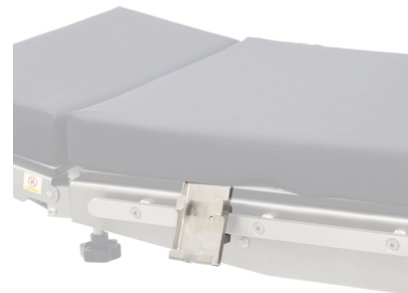
- Additional control unit
- For main functions: height, trendelenburg and lateral tilt



Hand Control Support

Model : OT60.29
 Gross weight : 600 Gr
 Packing Dimensions : 20x10x10cm

- Easy to fix to accessory rail
- Made of stainless steel



X-Ray Cassette Holder

Model : OT60.30
 Gross weight : 2 kg
 Packing Dimensions : 33x45x8cm

- Used to fix and support X-Ray cassettes
- Including fixing clamp
- Made of stainless steel



X-Ray Cassette Tray

Model : OT60.31
 Gross weight Packing : 4 kg
 Dimensions : 45x45x15cm

- Used to carry and position the X-Ray cassettes
- Including fixing clamp
- Made of stainless steel

