



Designed for healthcare facilities seeking cost-effective solutions without compromising quality, these low-capacity medical pendants combine German engineering with practicality. They are ideal for environments that require reliable and efficient utility management with moderate load demands.

STANDARDS

Classification	Class 1 (MDD 93/42 EEC)
EU Conformity	CE
Standards	HTM 02-01, HTM 2022, EN 11197, ISO 13485

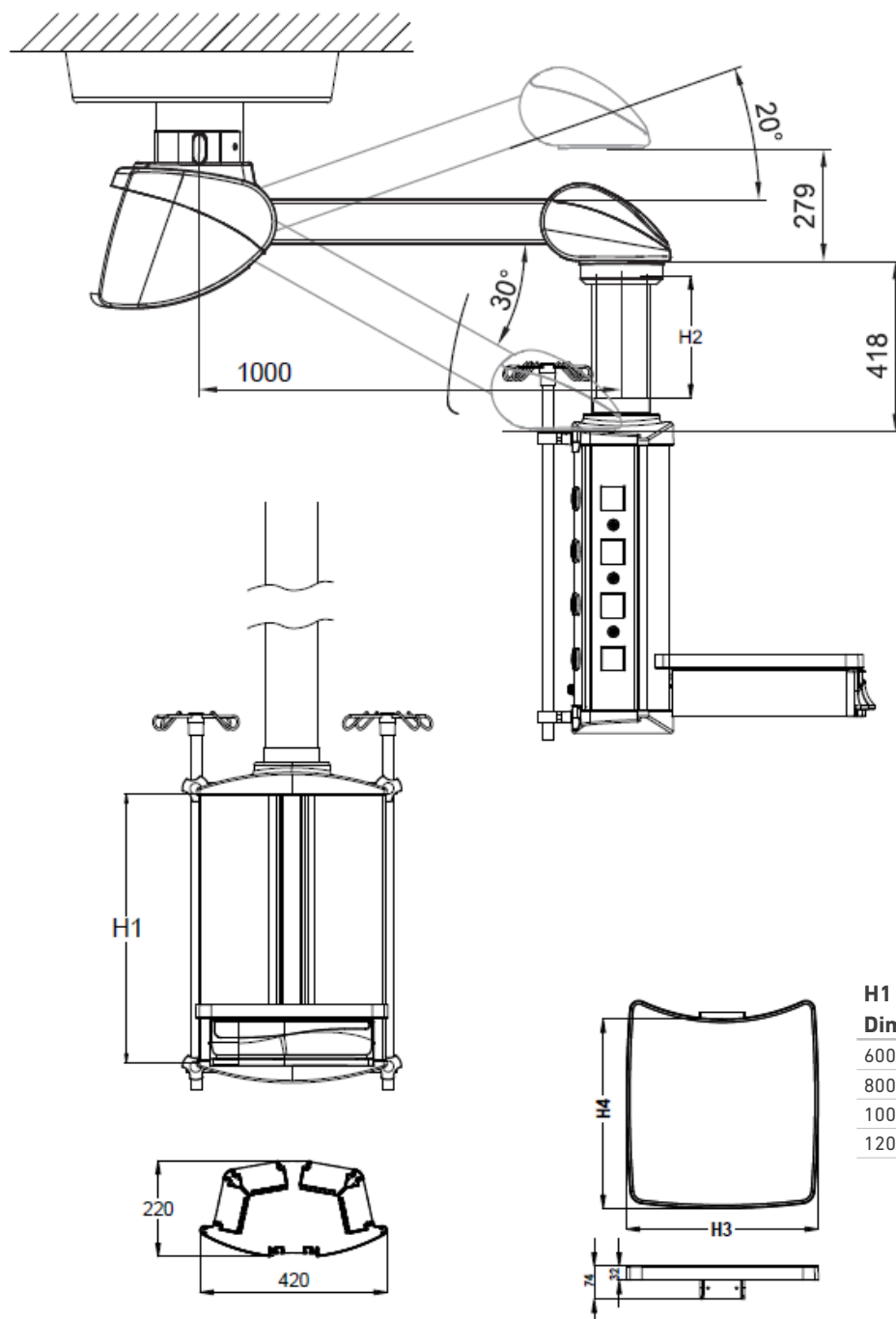
MATERIAL SPECIFICATIONS

Body	Static Painted (RAL 9002) Aluminum / Sheet Metal
Connection Arms	Static Painted (RAL 9002) Aluminum
Connection Pipes	Static Painted Steel Pipe
Covers	Plastic (ABS + PC)

TECHNICAL SPECIFICATIONS

Department	OR
Arm Type	Single Motorized
Arm Length	1000
Complete length in mm	1000
Length Up to	1600
Payload in kg	110
Payload with e- brake in kg	250
Vertical Load Newton	2195
Payload in lbs	330
"Brake System	pneumatic brake
Optional Magnetic e-brake	Yes
Rotation angle ceiling	340
Intermediate bearing	340°
Rotation angle drop tube	340°
Height adjustment	820 mm (20°upwards, 40°downwards movement) The upper stop can be limited.
Colour	RAL 9010
Electrical Protection Class according to IEC 60601-1	Class 1
Classification according to 93/42 EU and 2017/745 EU	Class 1
IP classification	IP 20

TECHNICAL DRAWING



• Note: ± 25 mm tolerance is given for metric measurements and $\pm 5^\circ$ tolerance is given for angle measurements.

* Product size is optional.